

### Olympian plug in system

Helps protect compressed air systems from over pressure by retarding excessive pressure build up

Integral pilot design provides superior sensitivity, accuracy, and quick response to over pressure conditions

High relief flow

Threaded relief port for silencer or piped exhaust



### Technical data

#### V64H

##### Maximum pressure:

250 psig (17 bar)

##### Operating temperature\*:

0° to +175°F (-20° to +80°C)

#### V68H

##### Maximum pressure :

300 psig (20 bar)

##### Operating temperature\*:

0° to +175°F (-20° to +80°C)

\* Air supply must be dry enough to avoid ice formation at temperatures below +35°F (+2°C).

### Materials

#### V64H

Body: zinc

Bonnet: aluminum

Adjusting screw: steel

Yoke: zinc

Elastomers: nitrile

#### V68H

Body: aluminum

Yoke: aluminum

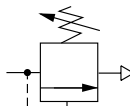
Bonnet: aluminum

Adjusting screw: steel

Valve: aluminum

Elastomers: nitrile

### V64H Ordering information

ISO Symbol	Port Size	Model	Weight lb (kg)	Service kit	Gasket kit
	1/4"	V64H-2AD-RMN	3.70 (1.68)	V64H-KIT	V13-GK
	3/8"	V64H-3AD-RMN	3.66 (1.66)	V64H-KIT	V13-GK
	1/2"	V64H-4AD-RMN	3.59 (1.63)	V64H-KIT	V13-GK
	3/4"	V64H-6AD-RMN	4.39 (1.99)	V64H-KIT	V13-GK

### V68H Ordering information

ISO Symbol	Port Size	Model	Weight lb (kg)	Service kit
	3/4"	V68H-6AD-RMN	4.87 (2.21)	4384-300
	1"	V68H-8AD-RMN	4.85 (2.20)	4384-300
	1-1/4"	V68H-AAD-RMN	4.89 (2.22)	4384-300
	1-1/4"	V68H-BAD-RMN	4.98 (2.26)	4384-300

**Options selector (V64H)**

V64H-★★D-R★★

Port size	Substitute
1/4"	2
3/8"	3
1/2"	4
3/4"	6
Threads	Substitute
PTF	A
ISO G parallel	G
No yoke	N**

\*\*V64H Gauge ports:  
1/8" PTF with PTF main ports  
1/8" ISO Rc with ISO G main ports  
V64H Exhaust port:  
1/2" PTF with PTF main ports  
1/2" ISO Rc with ISO G main ports

Gauge	Substitute
With	G
Without	N
Outlet pressure adjustment range*	Substitute
5 to 60 psig (0.3 to 4 bar)	F
5 to 150 psig (1 to 10 bar)	M
10 to 250 psig (0.7 to 17 bar)	S

\*Relief valve can be adjusted to pressures in excess of, and less than, those specified. Do not use these units to control pressures outside of the specified ranges.

**Options selector (V68H)**

V68H-★★D-R★★

Port size	Substitute
3/4"	6
1"	8
1-1/4"	A
1-1/2"	B
None	N
Threads	Substitute
PTF	A
ISO G parallel	G
No Yoke	N**

\*\*V68H Gauge ports:  
1/8" PTF with PTF yoke ports  
Rc1/8 with ISO G yoke ports  
V68H Exhaust port:  
1" PTF with PTF yoke ports  
Rc1 with ISO G yoke ports

Gauge	Substitute
With	G
Without	N
Outlet pressure adjustment range*	Substitute
0 to 60 (0.3 to 4 bar)	F
5 to 150 (1 to 10 bar)	M
10 to 250 psig (0.7 to 17 bar)	S

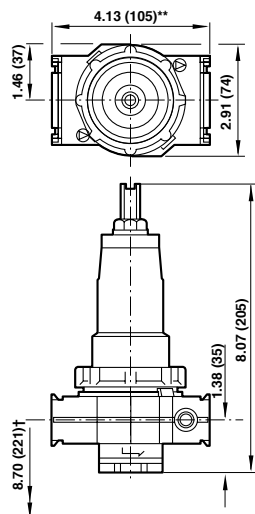
\*Relief valve can be adjusted to pressures in excess of, and less than, those specified. Do not use these units to control pressures outside of the specified ranges.

Accessories

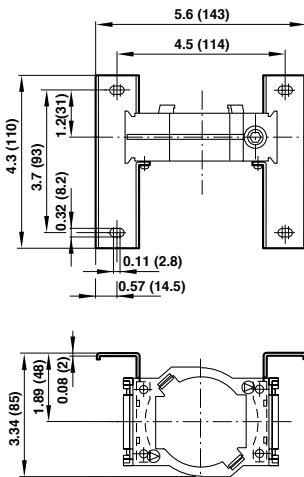
	Size	Bracket kit	Bracket kit	Gauge 0 ... 160 psig	Silencer	Tamper resistant cap	3/2 Shut-off valve
V64H	1/4"		74504-50				
	3/8"		74504-50				
	1/2"		74504-50				
	3/4"		74504-50				
V68H	3/4"	18-001-979					
	1"	18-001-979					
	1-1/4"	18-001-978					
	1-1/2"	-					

For additional options see website.

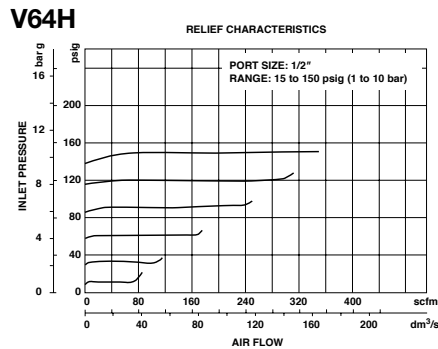
V64H



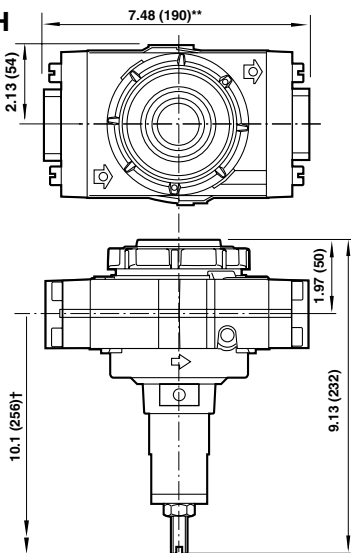
Mounting bracket (V64H)



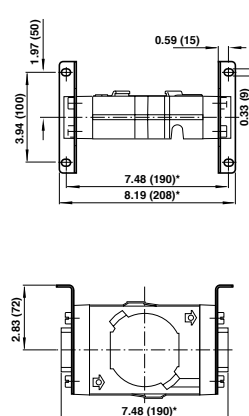
Typical Performance Characteristics



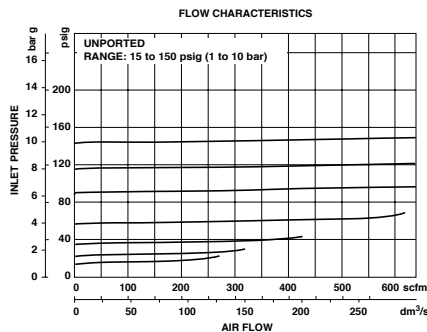
V68H



Mounting bracket (V68H)



V68H



\*\* Add 0.39" (10mm) 1-1/4" and 1-1/2" models.  
† Minimum clearance required to remove unit.

Dimensions in inches (mm)